

Let Me Go

Avril Lavigne ft. Chad Kroeger

Arranged by LittleTranscriber

Measures 1-4 of the piano arrangement. The key signature is three sharps (F#, C#, G#) and the time signature is 6/8. The melody in the right hand consists of eighth and quarter notes, while the left hand provides a simple harmonic accompaniment with dotted half notes.

Measures 5-8 of the piano arrangement. The melody continues with eighth and quarter notes, and the left hand accompaniment remains consistent with dotted half notes.

Measures 9-12 of the piano arrangement. The melody features a mix of eighth and quarter notes, and the left hand accompaniment continues with dotted half notes.

Measures 13-16 of the piano arrangement. The melody includes eighth and quarter notes, and the left hand accompaniment continues with dotted half notes.

Measures 17-20 of the piano arrangement. The melody continues with eighth and quarter notes, and the left hand accompaniment continues with dotted half notes.

21



Measures 21-24 of a piano piece in A major (three sharps). The right hand features a melody with eighth and sixteenth notes, often beamed together, and some chords. The left hand provides a steady accompaniment with eighth notes and chords. A watermark 'www.PianoArena.com' is visible across the middle of the page.

25



Measures 25-28 of the piano piece. The musical notation continues with similar patterns of eighth and sixteenth notes in both hands. The watermark 'www.PianoArena.com' is visible across the middle of the page.

29



Measures 29-32 of the piano piece. The right hand has some longer note values, including dotted half notes, while the left hand continues with eighth-note accompaniment. The watermark 'www.PianoArena.com' is visible across the middle of the page.

33



Measures 33-35 of the piano piece. The right hand features a more active melody with many sixteenth notes. The left hand continues with a consistent eighth-note accompaniment. The watermark 'www.PianoArena.com' is visible across the middle of the page.

36



Measures 36-38 of the piano piece. The piece concludes with a final chord in the right hand and a sustained bass note in the left hand. The watermark 'www.PianoArena.com' is visible across the middle of the page.

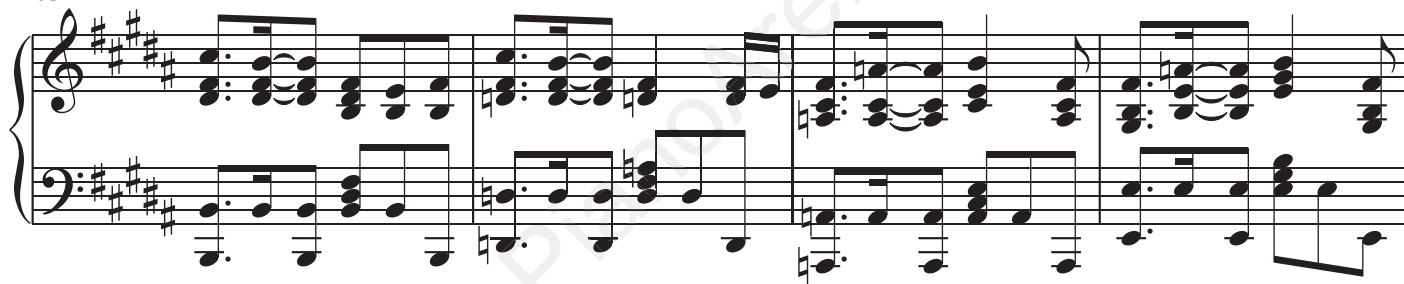
39



42



45



49



53



56

Measures 56-58 of a piano piece in D major. The right hand features a continuous eighth-note arpeggiated pattern. The left hand provides a harmonic accompaniment with chords and moving lines.

59

Measures 59-61. The right hand continues the arpeggiated pattern with some melodic variation. The left hand maintains the accompaniment.

62

Measures 62-64. The right hand's arpeggiated pattern continues. The left hand accompaniment includes some chordal textures.

65

Measures 65-69. The right hand features a more complex melodic line with some rests. The left hand accompaniment consists of sustained chords and moving bass lines.

70

Measures 70-74. The right hand plays a series of chords and dyads. The left hand continues with a steady accompaniment.

74

Measures 74-77: The treble clef contains complex chords and arpeggios, while the bass clef has a steady eighth-note accompaniment.

78

Measures 78-80: The treble clef has chords with some grace notes, and the bass clef continues the eighth-note accompaniment.

81

Measures 81-83: The treble clef features more complex arpeggiated figures, and the bass clef continues the eighth-note accompaniment.

84

Measures 84-86: The treble clef has dense arpeggiated patterns, and the bass clef continues the eighth-note accompaniment.

87

Measures 87-90: The treble clef has sparse chords, and the bass clef has long sustained notes.

91

94

98

102

106

110

Measures 110-113 of a piano piece in A major (three sharps). The right hand features a melodic line with eighth and sixteenth notes, while the left hand provides a harmonic accompaniment with chords and moving lines. The piece concludes with a double bar line at the end of measure 113.

114

Measures 114-117 of the piano piece. The right hand continues the melodic development with slurs and ties, and the left hand maintains the accompaniment. The section ends with a double bar line at the end of measure 117.

118

Measures 118-121 of the piano piece. The right hand has a more active melodic line with slurs, and the left hand continues with a steady accompaniment. The piece concludes with a double bar line at the end of measure 121.